

Solutions for better hearing

Products

audifon – innovative,  
creative, inspired





**audifon**

## Solutions for better hearing

audifon develops and produces modern and powerful hearing systems. Delivering quality in design and production, audifon assures an excellent price-value ratio and high customer satisfaction.

Our research & development team strives to provide state-of-the-art hearing solutions driven by innovation and based on German engineering. Manufactured in Germany and the US, every audifon hearing system combines the latest technology with first class workmanship.

For decades, audifon has been the preferred hearing system brand providing a full range of hearing solutions and accessories to customers in more than 65 countries worldwide.

Trust our know-how and experience in providing quality solutions for better hearing – now and in the future.

**audifon – innovative, creative, inspired**



## Product portfolio

## Content

### Software Solutions

With audifit and MySound! audifon offers effective software solutions for optimum fitting results.

### Hearing Systems

Discover the complete portfolio of fully digital hearing systems from audifon featuring the latest technology such as Wireless Connectivity. Modern and contemporary in design, our hearing systems are available in a variety of styles including RITE, BTE, ITE and Super-Power custom aids.

### Wireless Solutions

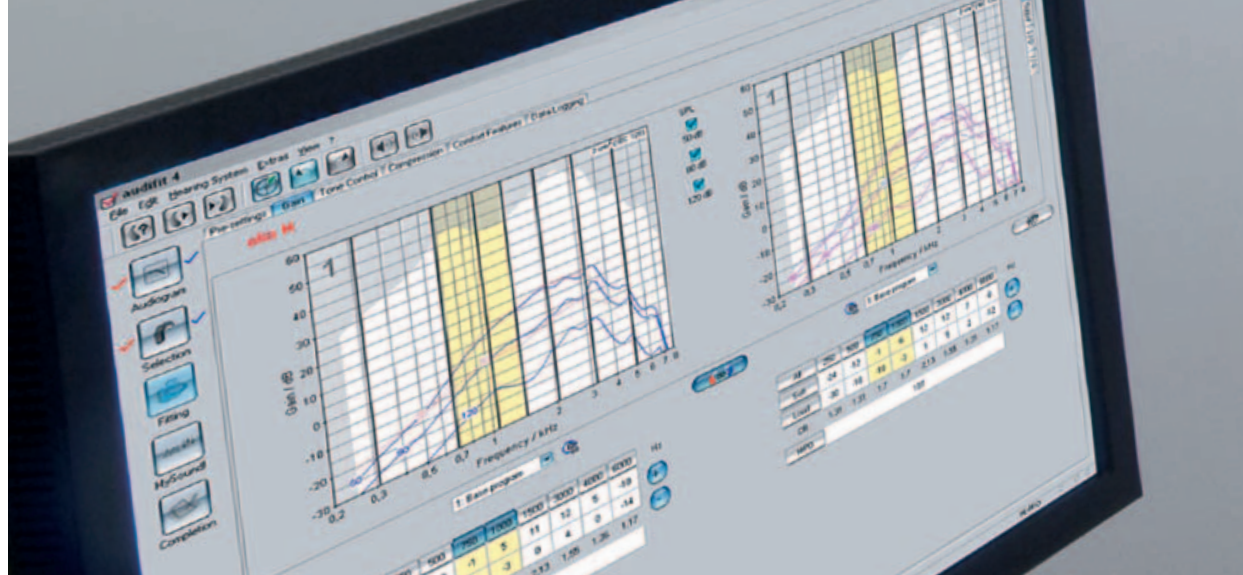
Experience the benefits of wireless comfort. With wireless accessories like the audifon multistreamer it is possible to directly stream audio signals from linked devices to hearing systems featuring Wireless Connectivity.

### CROS/BiCROS Solutions

via – audifon's wireless CROS/BiCROS system for customers with an unaidable hearing loss on one side uses the latest wireless real-time audio transmission.

### TRT Solutions

audifon – a leader in Tinnitus Retraining Therapy systems – offers a unique range of combined hearing system/noiser and pure noiser devices.

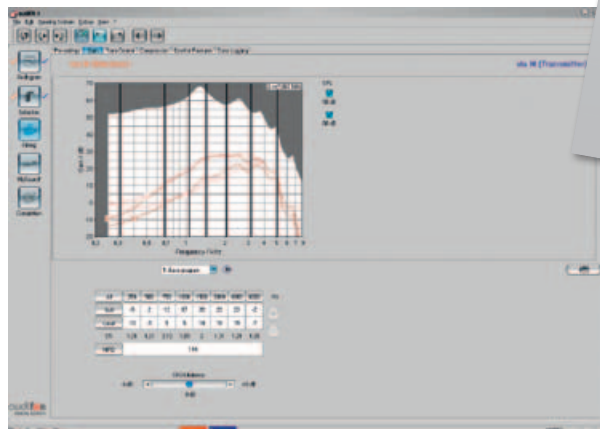
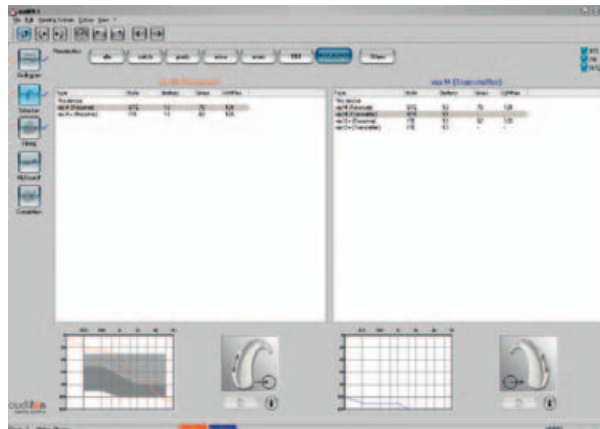


audifit

## Fitting software

audifon's user friendly fitting software audifit includes

- precise first fitting
- advanced programming parameters
- easy to follow programming guide
- HiPro and NOAHlink compatibility





## Simulate realistic sound worlds

**MySound!**

Discover the comprehensive possibilities of MySound!

### Live demonstration of hearing system features

Convince your customer: Demonstrate state-of-the-art hearing system features during the fitting process – live in your hearing studio!

MySound! simulates realistic sound worlds to give your customer the opportunity to experience the benefits of useful features like adaptive noise reduction, directional microphone technology and to understand how different hearing programs work.

A simple but effective tool to sell the advantages of state-of-the-art hearing system features. Your customers will love it!

### Interactive fine tuning and expert system

MySound! advanced interactive expert system offers incomparable flexibility to combine different “background noises” like busy traffic or a crowded restaurant with different “target noises” like the ringing of a bicycle bell or conversations.

To experience the benefits of MySound! visit our website at [www.audifon.com](http://www.audifon.com)







## Coupling

## Complete fitting flexibility

Fitting flexibility at its best

audifon offers a wide variety of fitting options for Receiver-In-The-Ear (RITE) and Behind-The-Ear (BTE) hearing systems.

### ■ RITE options



### ■ BTE options



## Usability at its best

audifon's multi-functional rocker switch can be pre-programmed to various settings:

- volume control only: for customers who wish to adjust loudness in various environments.
- program selection only: for customers who wish to tailor their hearing systems to different listening situations, such as music or noisy environment.
- volume control and program selection at the same time: for experienced customers who want more control.





## Hearing systems

## Overview

### Exclusive

audifon's exclusive housing line offers a variety of state-of-the-art hearing systems in an inspiring design. The housings are designed to exceed the demands of today's most discerning customers.

#### lacquered



arabica

bronze

champagne

black

graphite

#### unlacquered



charcoal

silver-grey

beige

### Classic

audifon's classic line represents a portfolio of trusted styles.

#### unlacquered



charcoal

beige

grey

brown

nougat

transparent



**nanoShield**

## Maximum protection

audifon nanoShield is a layer one thousand times finer than the human hair. It alters the surface texture of the hearing system, making it moisture and dirt repellent. Moisture coming in contact with a nano-coated hearing system will form tiny droplets which then roll off of the device.

nanoShield protects the housing and all of its components including the digital signal processor and converter against corrosion and other moisture related damages.

Enjoy the benefits of nanoShield:

- **special coating makes hearing systems moisture repellent**
- **effective protection against corrosion**
- **simplifies daily cleaning & care**
- **ultimately, prolongs the life span of the hearing system**

## Tested under extreme conditions

The protective effect of audifon nanoShield was put to the test at a long-term study in a climate controlled laboratory. Under extreme conditions using high concentrated saline, rust and corrosion had no chance against audifon nanoShield.



with nanoShield



without nanoShield

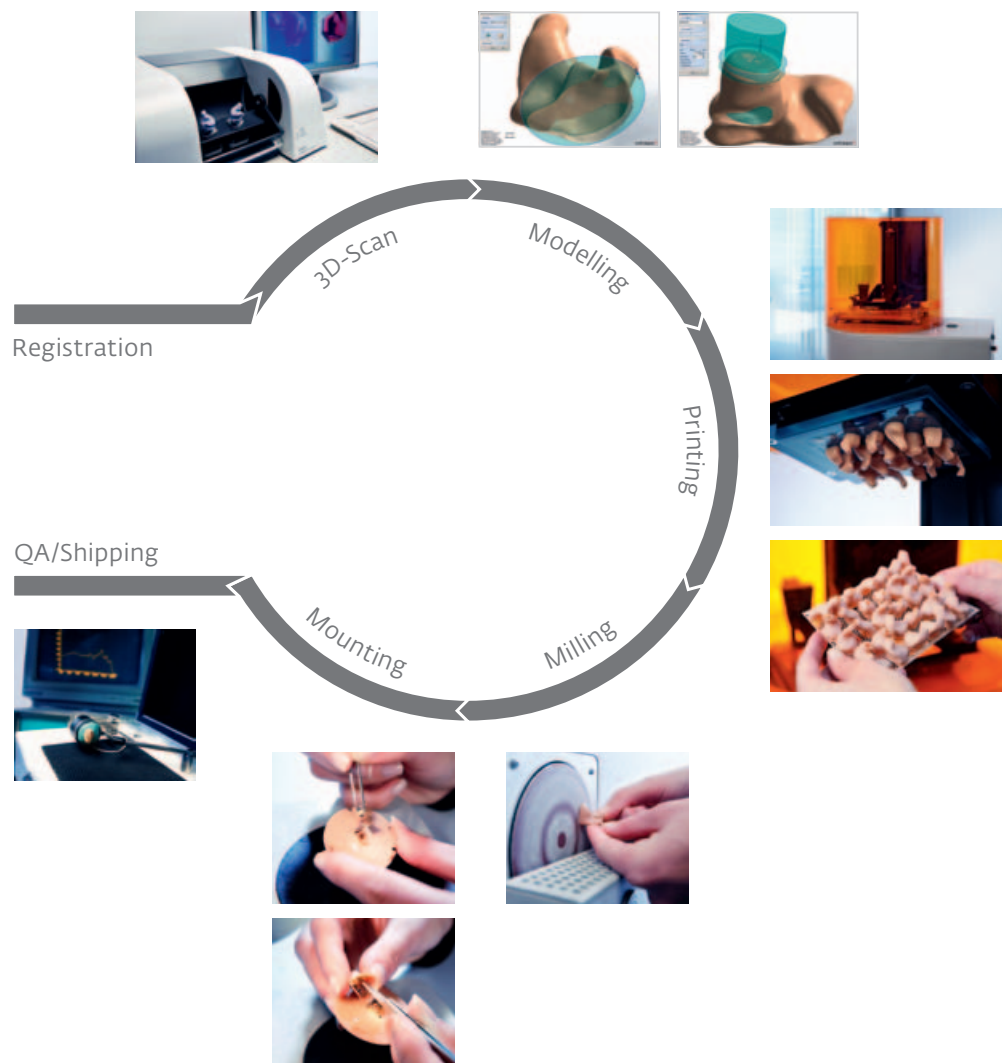




## Cutting edge production processes

**Laserscan**

audifon utilizes high tech innovative methods in the production of custom hearing systems. Employing laser technology, the latest CAD design tools and Digital Light Processing (DLP), audifon is able to reproduce an impression of the ear with accuracy. These state-of-the-art methods, along with the decades of experience in assembling ITEs, result in a high level of fitting success. German engineering and American resourcefulness team together to bring you products which enhance customer satisfaction.





elia pico

## The perfect fit

### Ambitiously easy

elia pico, audifon's new miniCIC, is specially designed for customers who insist on discreet design that is both functional and performs to highest standards. elia pico needs no special impression technique\* and therefore literally becomes the perfect fit for you and your customers.

### High quality production

elia pico is being produced at high quality standards in the United States. With its ability for deep canal-fitting and easy operation, wearing elia pico is so comfortable your customers might even forget that they are wearing hearing systems at all.





## Hearing well is not a big thing **elia pico**

### Heard but not seen

With its black faceplate, elia pico disappears nearly completely in the shadow of the ear canal. Discerning customers will appreciate the discreet profile of the hearing system and enjoy the simplicity of elia pico.

### Minimum dimensions, maximum performance

Like all elia hearing systems, pico provides excellent sound quality. Its flexible fitting range and top features like Sound Dynamix, audifon's fully automated situation recognition, make elia pico a small high performer.

### Your advantages

- **no special impression technique necessary\***
- **discreet design thanks to black faceplate**
- **top featured hearing system with Sound Dynamix technology**



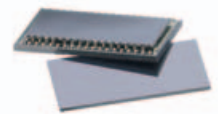
## Features

### Innovations at a glance



#### Storm DSP platform

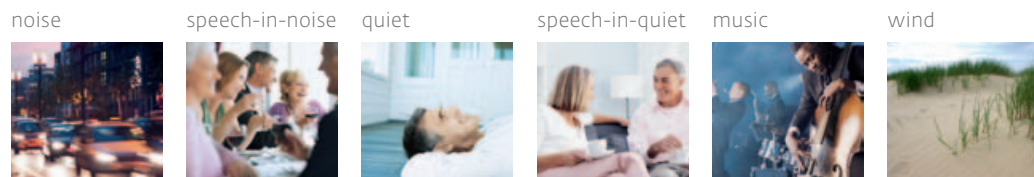
audifon introduces its latest Digital Sound Processor Storm: The next generation audio-processor that offers higher processing speed at reduced power consumption resulting in more sophisticated audio algorithms.



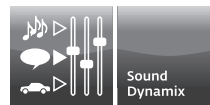
#### Sound Dynamix

audifon's Sound Dynamix automatically adapts to different sound environments – creating hassle-free listening pleasure at all times, even in the most demanding situations.

#### Environment



#### Sound Dynamix



Sound Dynamix automatically identifies the sound environment and adapts the hearing system features for optimal listening comfort.

#### Adaptive Algorithms



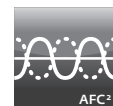
Adaptive Directional Microphones

8|16

WDRC-Channels/Channels



Adaptive Noise Reduction



Adaptive Feedback Cancellation





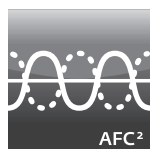
## Sophisticated feature set

## Features



### Wireless Connectivity

audifon hearing systems featuring Wireless Connectivity can be connected with any Bluetooth enabled audio source. Teaming up with the audifon multistreamer, music, phone calls or TV signal can be streamed directly to the users hearing systems.



### AFC² – our next generation Adaptive Feedback Cancellation

AFC² is audifon's latest and most robust feedback canceller. AFC² instantly cancels out feedback based on our new standard-setting feedback management algorithm. The phase-cancellation algorithm in combination with the faster Storm DSP simply means an increased added stable gain and preserved sound quality.



### Automatic Telephone Solutions

audifon offers two Automatic Telephone Solutions for optimal telephone listening:

- AutoPhone switches to an acoustic telephone program
- Auto T-Coil switches to a t-coil



### Data Logging

Monitors the customer's usage and program selections providing a historical reading so that the hearing care professional can further fine tune the hearing system for higher customer satisfaction.



### easyclick

easyclick wirelessly synchronizes changes to program or volume settings between two hearing systems. This guarantees easy, single-handed usability.

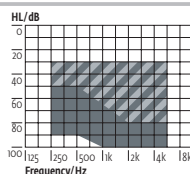
# Housing



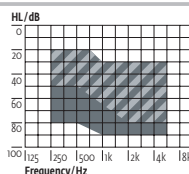
## Exclusive BTE

	M	S	R
	Power BTE	BTE	RITE
<b>Hearing Systems</b>			
eox	■	■	
elia	■	■	■
prado	■	■	■
switch			■
<b>TRT Instruments</b>			
eox TRT*	■	■	
elia TRT*	■	■	
prado TRT*	■	■	
switch 8 TRT			■
<b>CROS/BiCROS</b>			
via	■	■	
<b>Fitting</b>			
OpenFit	Easy Thin Tube	Easy Thin Tube	RITE
<b>Technical Data</b>			
Battery Size	13	312	312
Average Battery Life (Zinc-Air)	350h	250h	220h (120h)**
Peak Value $V_{max}/OSPL_{max}$ in dB	70/131	60/126	50/111 (56/110)***
Frequency Range in Hz	100–6500	100–5700	200–8000
<b>Configuration</b>			
nanoShield	●	●	●
Volume Control	Rocker Switch	Rocker Switch	
Program Switch	Rocker Switch	Rocker Switch	●*
T-Coil	●	●	
Direct Audio Input (DAI)	●	●	
Audio Adapter	in 2012	in 2012	
Battery Door Lock	●	●	
<b>Colors/Family</b>	<b>eox elia prado</b>	<b>eox elia prado</b>	<b>all</b>
unlacquered	Beige	○ ○ ○	○
	Silvergrey	○ ○ ○	○
	Charcoal	○ ○ ●	●
	Graphite	○ ●	
lacquered	Bronze	● ○	
	Arabica	○ ○	
	Champagne	○ ○	
	Black	○ ○	

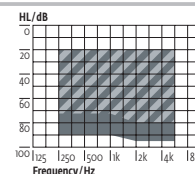
### Fitting Range



The striped area applies to the M-housing with Easy Thin Tube option.



The striped area applies to the S-housing with Easy Thin Tube option.

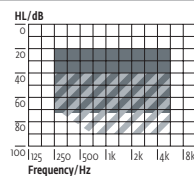
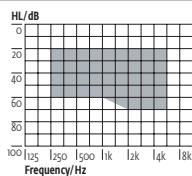


The dark area applies to the R-housing with Power Sleeve option.

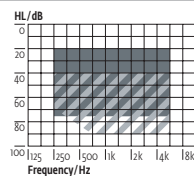


## Exclusive ITE

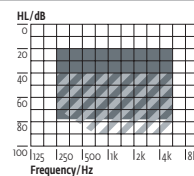
pico	CIC	CIC P	IS	IS P	IS+	IS+ P	
mini CIC	ITE	Power ITE	ITE	Power ITE	ITE	Power ITE	
					■		<b>Hearing Systems</b>
■	■	■	■	■	■	■	eox
	■	■	■	■	■	■	elia
							prado
							switch
					■		<b>TRT Instruments</b>
					■		eox TRT*
	■		■		■		elia TRT*
	■		■		■		prado TRT*
							switch 8 TRT
							<b>CROS/BiCROS</b>
					■		via
							<b>Fitting</b>
							OpenFit
							<b>Technical Data</b>
10	10	10	312	312	13	13	Battery Size
120h	120h	120h	200h	250h	320h	380h	Average Battery Life (Zinc-Air)
41/110	51/119	70/126	57/118	70/126	62/121	70/126	Peak Value $V_{max}/OSPL_{max}$ in dB
100–8000	200–7700	200–5400	200–5400	200–5400	200–8000	200–5400	Frequency Range in Hz
							<b>Configuration</b>
	○	○	○	○	○	○	nanoShield
	○	○	○	○	○	○	Volume Control
			○	○	○	○	Program Switch
			○	○	○	○	T-Coil
							Direct Audio Input (DAI)
							Audio Adapter
							Battery Door Lock
							<b>Colors/Family</b>
	●	●	●	●	●	●	■ Pink
	○	○	○	○	○	○	■ Tan
	○	○	○	○	○	○	■ Brown
●							■ Black



The striped area applies to the CIC P version.



The striped area applies to the IS P version.



The striped area applies to the IS+ P version.

## Fitting Range

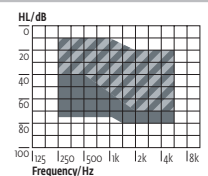
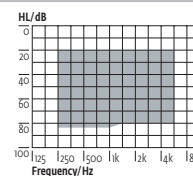
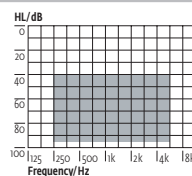
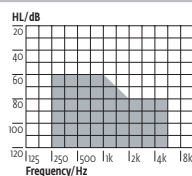
# Housing



## Classic BTE

	X P	X	M	S+	S
	Power BTE	Power BTE	BTE	BTE	BTE
<b>Hearing Systems</b>					
arriva		■	■	■	■
avero	■	■	■	■	■
<b>TRT Instruments</b>					
arriva TRT*		■	■	■	■
<b>Fitting</b>					
OpenFit				Thin Tube	Thin Tube
<b>Technical Data</b>					
Battery Size	675	675	13	13	312
Average Battery Life (Zinc-Air)	242h	530h	350–370h	370–380h	210–230h
Peak Value $V_{max}/OSPL_{max}$ in dB	81/141	78/136	66/133	60/124	60/124
Frequency Range in Hz	110–3660	100–4900	100–4700/5400	100–5600	100–5600
<b>Configuration</b>					
nanoShield	●	●	●	●	●
Volume Control	●	●	●	●	●
Program Switch	●	●	●	●	●
T-Coil	●	●	●	●	●
Direct Audio Input (DAI)	●		○	○	
Audio Adapter	○		○	○	
Spectacle Adapter				○	○
Battery Door Lock	●				
<b>Colors/Family</b>	<b>avero</b>	<b>all</b>	<b>all</b>	<b>all</b>	<b>all</b>
unlacquered					
Beige	●	●	●	●	●
Brown	○	○	○	○	○
Charcoal		○	○	○	○
Grey	○	○	○	○	○
Nougat		○	○	○	○
Transparent		○	○	○	○

### Fitting Range



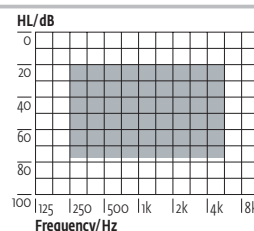
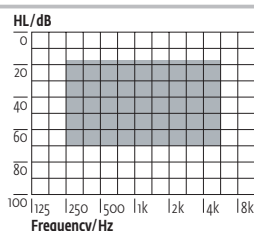
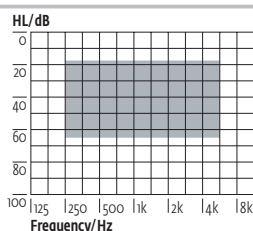
The striped area applies to the S-housing with OpenFit option.





## Classic ITE

CIC	IS	IS+	
ITE	ITE	ITE	
■	■	■	<b>Hearing Systems</b>
■	■	■	arriva
■	■	■	avero
■	■	■	<b>TRT Instruments</b>
■	■	■	arriva TRT*
			<b>Fitting</b>
			OpenFit
			<b>Technical Data</b>
10	312	13	Battery Size
120h	200–220h	320–390h	Average Battery Life (Zinc-Air)
51/118	57/118–119	62/120	Peak Value $V_{max}/OSPL_{max}$ in dB
200–6500/7700	200–5600/7700	200–5800/6200	Frequency Range in Hz
			<b>Configuration</b>
			nanoShield
			Volume Control
			Program Switch
			T-Coil
			Direct Audio Input (DAI)
			Audio Adapter
			Spectacle Adapter
			Battery Door Lock
			<b>Colors/Family</b>
●	●	●	Pink
○	○	○	Tan
○	○	○	Brown



### Fitting Range



Exclusive

## Family overview

	Exclusive eox family	elia family	prado family
<b>Wireless features</b>	Wireless Connectivity (via multistreamer)		
	Binaural T-Coil		
	easyclick		
<b>Advanced comfort features</b>	Sound Dynamix (SD)	Sound Dynamix (SD)	
	AutoPhone	AutoPhone	
	Auto T-Coil	Auto T-Coil	
<b>Microphone technology</b>	Adaptive Directional Microphones (ADM)	Adaptive Directional Microphones (ADM)	
	Directional Microphones (DM)	Directional Microphones (DM)	Directional Microphones (DM)
	Omnidirectional Microphone	Omnidirectional Microphone	Omnidirectional Microphone
<b>Programs and frequency shaping</b>	up to 4 Programs	up to 4 Programs	up to 4 Programs
	8 WDRC Channels	8 WDRC Channels	8 WDRC Channels
	16 Channels	16 Channels	16 Channels
<b>Comfort features</b>	Adaptive Noise Reduction (ANR)	Adaptive Noise Reduction (ANR)	Adaptive Noise Reduction (ANR)
	Adaptive Feedback Cancellation (AFC <sup>2</sup> )	Adaptive Feedback Cancellation (AFC <sup>2</sup> )	Adaptive Feedback Cancellation (AFC <sup>2</sup> )
	Expansion (Squelch)	Expansion (Squelch)	Expansion (Squelch)
<b>Fitting support</b>	Data Logging	Data Logging	
	MySound!	MySound!	MySound!
<b>TRT/Combi devices</b>	TRT option***	TRT option***	TRT option***
<b>Color option</b>	lacquered/unlacquered	lacquered/unlacquered	unlacquered
<b>Water repellent</b>	nanoShield**	nanoShield**	nanoShield**



Exclusive

switch family

Classic

arriva family

avero family

Omnidirectional Microphone

up to 4 Programs

8/4\* WDRC Channels

16/6\* Channels

Adaptive Noise Reduction (ANR)

Adaptive Feedback Cancellation (AFC)

Expansion (Squelch)

Omnidirectional Microphone

up to 2 Programs (up to 4 with ITEs)

4 WDRC Channels

8 Channels

Adaptive Feedback Cancellation (AFC<sup>2</sup>)

Expansion (Squelch)

Omnidirectional Microphone

1 Program + T-Coil\*\*\*\*

2 WDRC Channels

2 Channels

Adaptive Feedback Cancellation (AFC<sup>2</sup>)

Expansion (Squelch)

MySound!

TRT option

unlacquered

nanoShield\*\*

MySound!

TRT option\*\*\*

unlacquered

nanoShield\*\*

trimmer-based

unlacquered

nanoShield\*\*



**multistreamer**

## Connected hearing

The audifon multistreamer is the universal interface between communication media and audifon hearing systems featuring Wireless Connectivity. Users can experience the benefits of wireless comfort in various situations:

- use hearing systems as cordless headphones when watching TV or listening to music with a MP3 player
- allows Bluetooth connection with a (mobile) phone hearing systems can be used as hands-free device
- streaming of any sound source connected via audio input

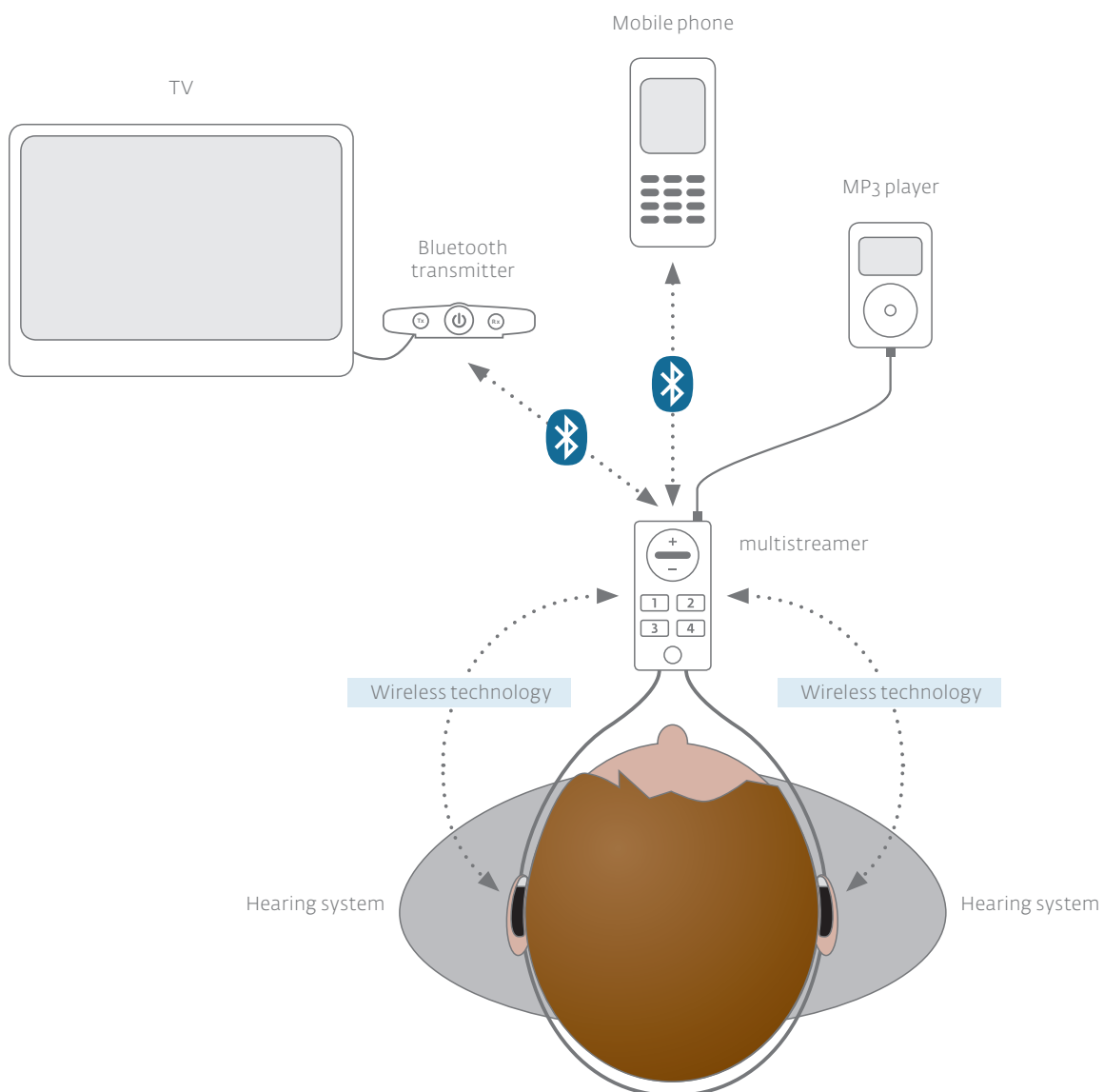






Comfortable connectivity

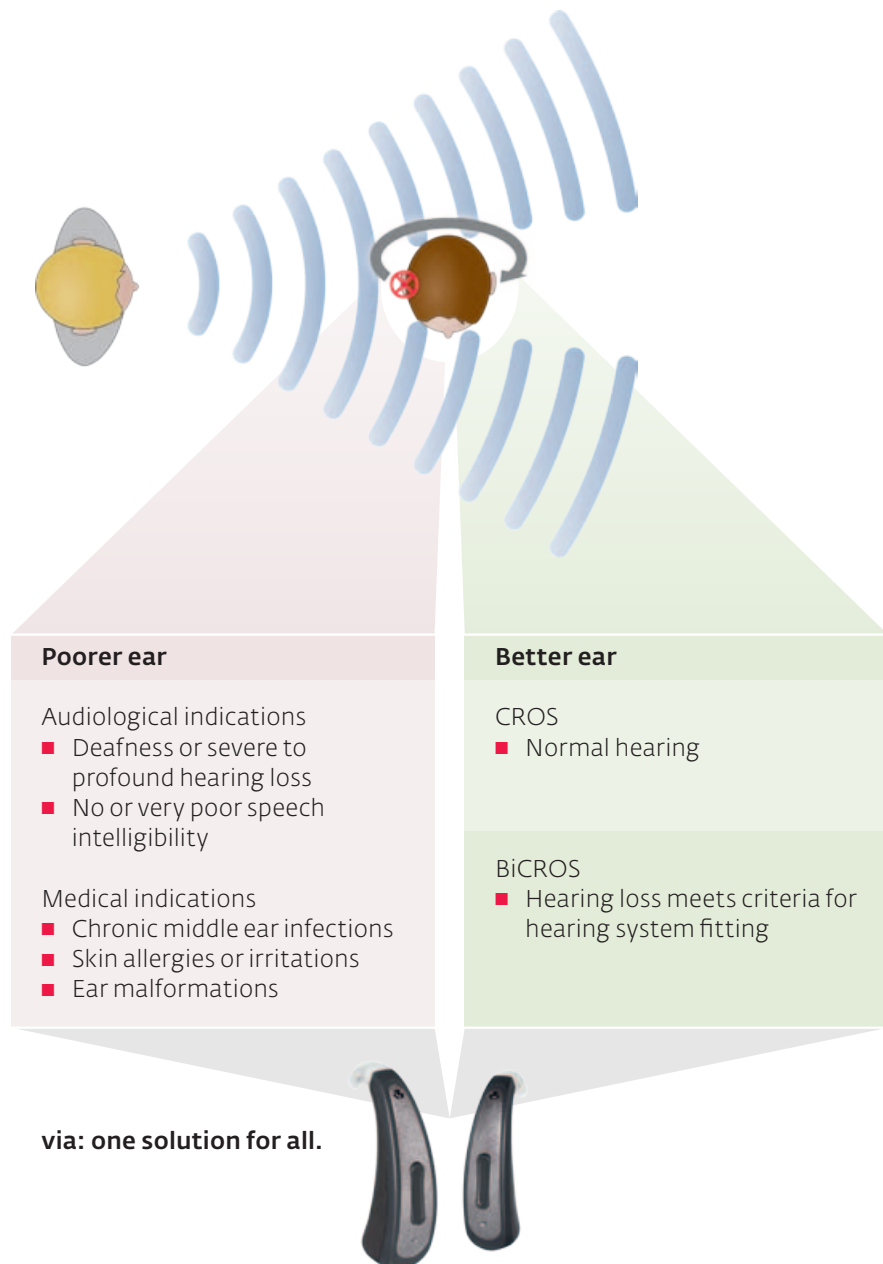
**multistreamer**





via

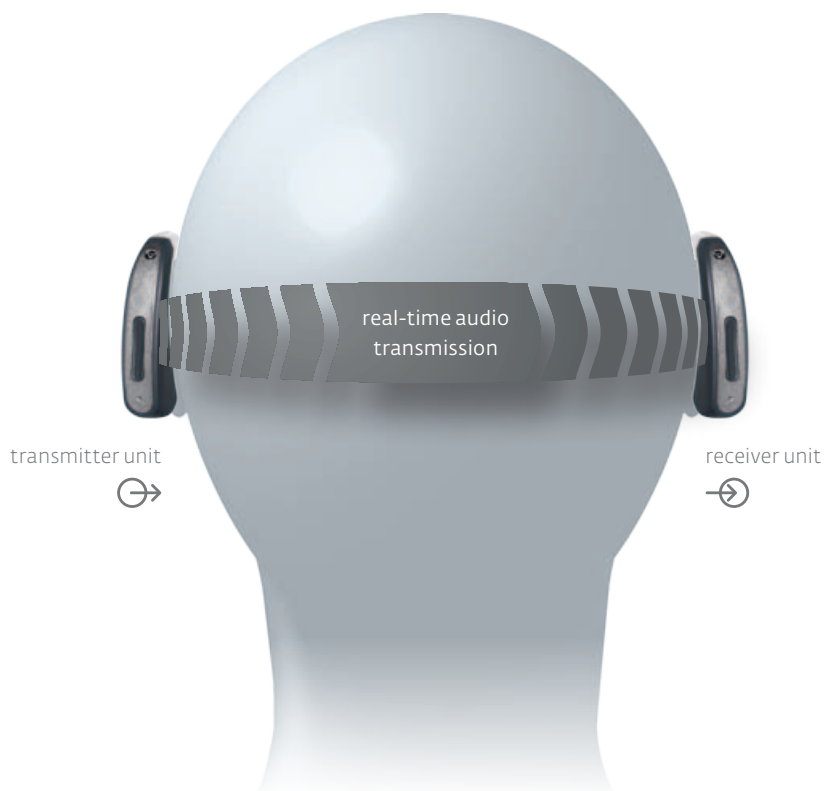
CROS/BiCROS implementation



## Real-time wireless audio transmission **via**

audifon via uses high-bandwidth audio transmission to transfer audio-signals from the customer's unaidable ear to the better ear.

The transmitter hearing system picks up sound signals and streams them real-time to the receiver hearing system on the better ear.

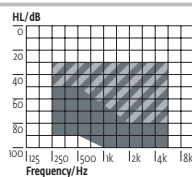




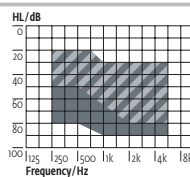
via

	M	S	IS+
	<b>BTE</b>	<b>BTE</b>	<b>ITE</b>
<b>Fitting</b>			
OpenFit	Easy Thin Tube	Easy Thin Tube	
<b>Technical Data</b>			
Battery Size	13	312	13
Average Battery Life (Zinc-Air)	270h/80h*	180h/50h*	260h/80h*
Peak Value $V_{max}/OSPL_{max}$ in dB	70/131	60/125	62/120
Frequency Range in Hz	100–6500	100–5900	100–7200
<b>Transmission</b>			
Technology	Digital NFMI	Digital NFMI	Digital NFMI
Frequency	10,6 MHz	10,6 MHz	10,6 MHz
Range	18–22 cm	18–22 cm	18–22 cm
Field strength	-35 dB $\mu$ A/m at 10 m	-35 dB $\mu$ A/m at 10 m	-35 dB $\mu$ A/m at 10 m
<b>Configuration</b>			
nanoShield	●	●	
Volume Control	Rocker switch	Rocker switch	
Program Switch	Rocker switch	Rocker switch	
T-Coil	●	●	○
Battery Door Lock	●	●	
<b>Colors/Family</b>			
unlacquered	Beige	○	
	Silvergrey	○	
	Charcoal	○	
	Pink		●
	Tan		○
lacquered	Brown		○
	Graphite	●	
	Bronze	○	
	Arabica	○	
	Champagne	○	
	Black	○	

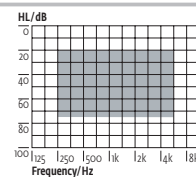
#### Fitting Range (BiCROS)



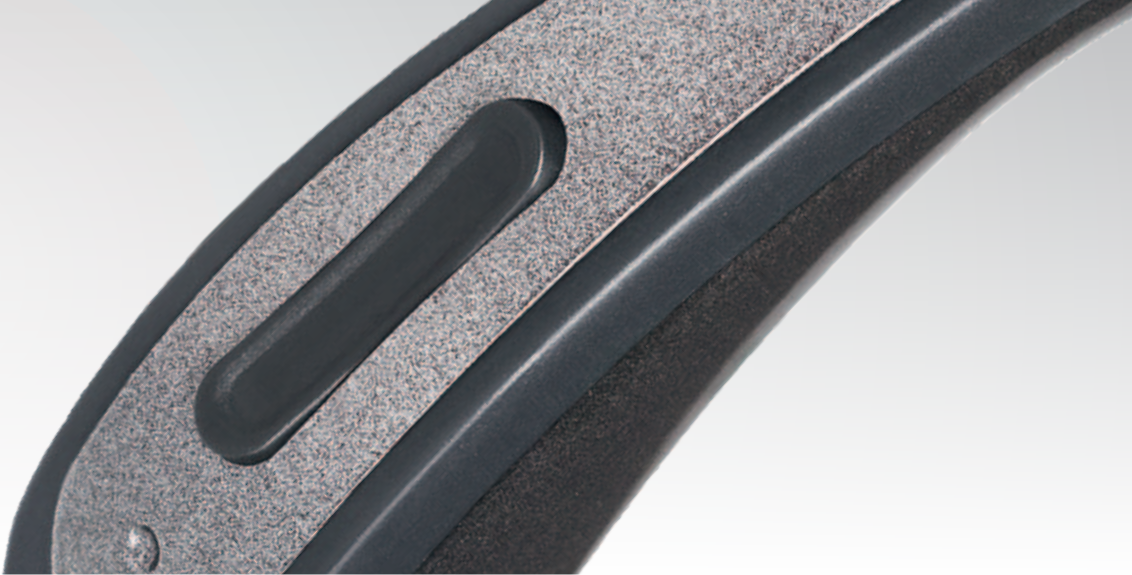
The striped area applies to the M-housing with Easy Thin Tube Option.



The striped area applies to the S-housing with Easy Thin Tube Option.







## Overview **via**

### via family

<b>Wireless-Features</b>	easyclick	Wireless synchronization of program-switching and volume-setting commands between hearing systems.
<b>Advanced comfort features</b>	AutoPhone	
	Auto T-Coil	In BiCROS applications sound resync seamlessly synchronizes time-differences in audio signals between the two ears.
	sound resync	
<b>Microphone technology</b>	Omnidirectional Microphone	
<b>Programs and frequency shaping</b>	4 Programs	audifon via's configuration for CROS- or BiCROS-mode is easily done in only a few steps using the audifit software. First fittings in audifit are based on the CROS algorithm developed by Harvey Dillon at Australia's National Acoustic Laboratory (NAL).
	8 WDRC Channels	
	16 Channels	
<b>Comfort features</b>	Adaptive Noise Reduction (ANR)	
	Adaptive Feedback Cancellation (AFC <sup>2</sup> )	
	Expansion (Squelch)	
<b>Fitting support</b>	Data Logging	
	MySound!	
	NAL CROS fitting rule	
<b>Color option</b>	lacquered/unlacquered	
<b>Water repellent</b>	nanoShield*	



TRT Solutions
Tinnitus Retraining Therapy

audifon offers a selection of high quality TRT devices which include hearing systems combined with noise generators as well as pure noisers for all individual Tinnitus Retraining Therapy needs.

	switch family	sueno family**	jump family
Application	TRT	TRT	TRT
Noise signal options	Broadband Noise	Broadband Noise	Broadband Noise
	low and high frequency shaping	low and high frequency shaping	low and high frequency shaping
Fitting support	programmable	programmable	trimmer-based
Color option	unlacquered	unlacquered	unlacquered
Water repellent	nanoShield*	nanoShield*	nanoShield*



## Tinnitus Retraining Therapy

TRT Solutions

Tinnitus Retraining Therapy (TRT) is a form of habituation therapy specifically designed to help people who suffer from tinnitus. TRT uses various counselling techniques to help the patients overcome their tinnitus perception. Noise generators are used in TRT to produce a background noise to provide distraction and relief in silent situations when tinnitus is most likely to be perceived.

### Product overview

	TRT-Instruments	Combined device	Type	Page
jump CIC TRT	■		ITE	29
jump S TRT	■		BTE	28
jump S+ TRT	■		BTE	28
sueno CIC**	■		ITE	29
sueno S**	■		BTE	28
switch TRT	■		RITE	28
switch 8 TRT		■	RITE	14



# Housing



## TRT Solutions

	R	S+	S
	<b>RITE</b>	<b>BTE</b>	<b>BTE</b>
<b>TRT Instruments</b>			
switch	■		
sueno*			■
jump		■	■
<b>Fitting</b>			
OpenFit	RITE	Thin Tube	Thin Tube
<b>Technical Data</b>			
Battery Size	312	13	312
Average Battery Life (Zinc-Air)	160h	650h	320-350h
Peak Value $V_{max}/OSPL_{max}$ in dB	-/100	-/74	-/74-92
Frequency Range in Hz	200-6000	200-5700	200-5700/6400
<b>Configuration</b>			
nanoShield	●	●	●
Volume Control		●	●
Program Switch	●		
T-Coil			
Direct Audio Input (DAI)			
Audio Adapter			
Spectacle Adapter		○	○
Battery Door Lock			
<b>Colors/Family</b>	<b>switch</b>	<b>jump</b>	<b>sueno, jump</b>
unlacquered			
Beige	○	●	●
Brown		○	○
Charcoal	●	○	○
Grey		○	○
Silvergrey	○		
Nougat		○	○
Transparent		○	○



CIC

TRT Solutions

ITE

	TRT Instruments
	switch
■	sueno*
■	jump
	<b>Fitting</b>
Open Canal	OpenFit
	<b>Technical Data</b>
10	Battery Size
140–220h	Average Battery Life (Zinc-Air)
-70–92	Peak Value $V_{max}/OSPL_{max}$ in dB
200–5500/8000	Frequency Range in Hz
	<b>Configuration</b>
	nanoShield
●	Volume Control
	Program Switch
	T-Coil
	Direct Audio Input (DAI)
	Audio Adapter
	Spectacle Adapter
	Battery Door Lock
	<b>Colors/Family</b>
●	Pink
○	Tan
○	Brown



## Accessories

### High-class accessories

#### B-Speech RTX1

This Bluetooth transmitter offers the possibility to transmit audio signals from devices such as TV, hi-fi systems, MP3 players or mobile phones to the audifon multistreamer and thus to your hearing systems featuring Wireless Connectivity within 100 metres.



#### RadioLight DIR II

The impressive radio hearing headset is ergonomic in design and lightweight. Its signal can reach up to 100 meters, thus guarantees mobility within the entire house.



#### looplink

The looplink is a lightweight wireless device utilizing Bluetooth technology that provides hands-free communication, for example from a mobile phone to the hearing systems. The looplink can be worn like a necklace.





## Care and hygiene

## Accessories

### Batteries

audifon offers a complete range of hearing aid zinc air batteries: the powerful solution with long-lasting energy!



### pro care

audifon pro care is a complete care and hygiene series for behind-the-ear hearing systems, in-the-ear hearing systems and earmolds.



### Dry case

audifon dry case keeps moisture out of hearing systems and earmolds. Powered by a 12V electric cord, the dry case gently keeps them dry without harming the hearing systems. Hearing systems stay dry and durable.





**audifon** Solutions for better hearing

Log on to [www.audifon.com](http://www.audifon.com) and click on our Partner Resources to access:



**Service Center**

Download the latest technical information for service & maintenance, including latest version of software.

**Corporate Headquarters**

audifon GmbH & Co. KG  
Werner-von-Siemens-Straße 2  
99625 Kölleda  
Germany

Phone +49-3635-4056-590  
Fax +49-3635-4056-589

[contact@audifon.com](mailto:contact@audifon.com)

**USA**

audifon USA Inc.  
403 Chairman Ct., Suite 1  
Debary, Florida 32713  
PO BOX 531700  
USA

Phone +01-386-668-8812  
Fax +01-386-753-9564  
Toll Free 800.776.0222

[contact.usa@audifon.com](mailto:contact.usa@audifon.com)

**Asia Pacific**

audifon Asia Pacific Pte Ltd  
260 Orchard Road  
The Heeren #12-09  
Singapore 238855  
Singapore

Phone +65-62964900  
Fax +65-63922306

[contact.asia@audifon.com](mailto:contact.asia@audifon.com)

[www.audifon.com](http://www.audifon.com)